

# UWT Learning Commons & Engineering Remodel

## Project Update

20 January 2021

# Introduction



# Project Management Team (PMT)



Shannon Thompson  
Project Manager  
UW Tacoma  
thompsha@uw.edu



Jennifer Myers  
Construction Manager  
UW Tacoma



Victoria Buker  
Design-Build Manager  
Sellen Construction



Todd Olson  
Project Manager  
McGranahan Architects

# Project Executive Committee (PEC)



**Bonnie Becker**  
Associate Vice Chancellor  
for Student Success  
Academic Affairs



**Stanley Joshua**  
Director  
Facilities Services



**Raj Katti**  
Dean & Professor  
School of Engineering and  
Technology (SET)

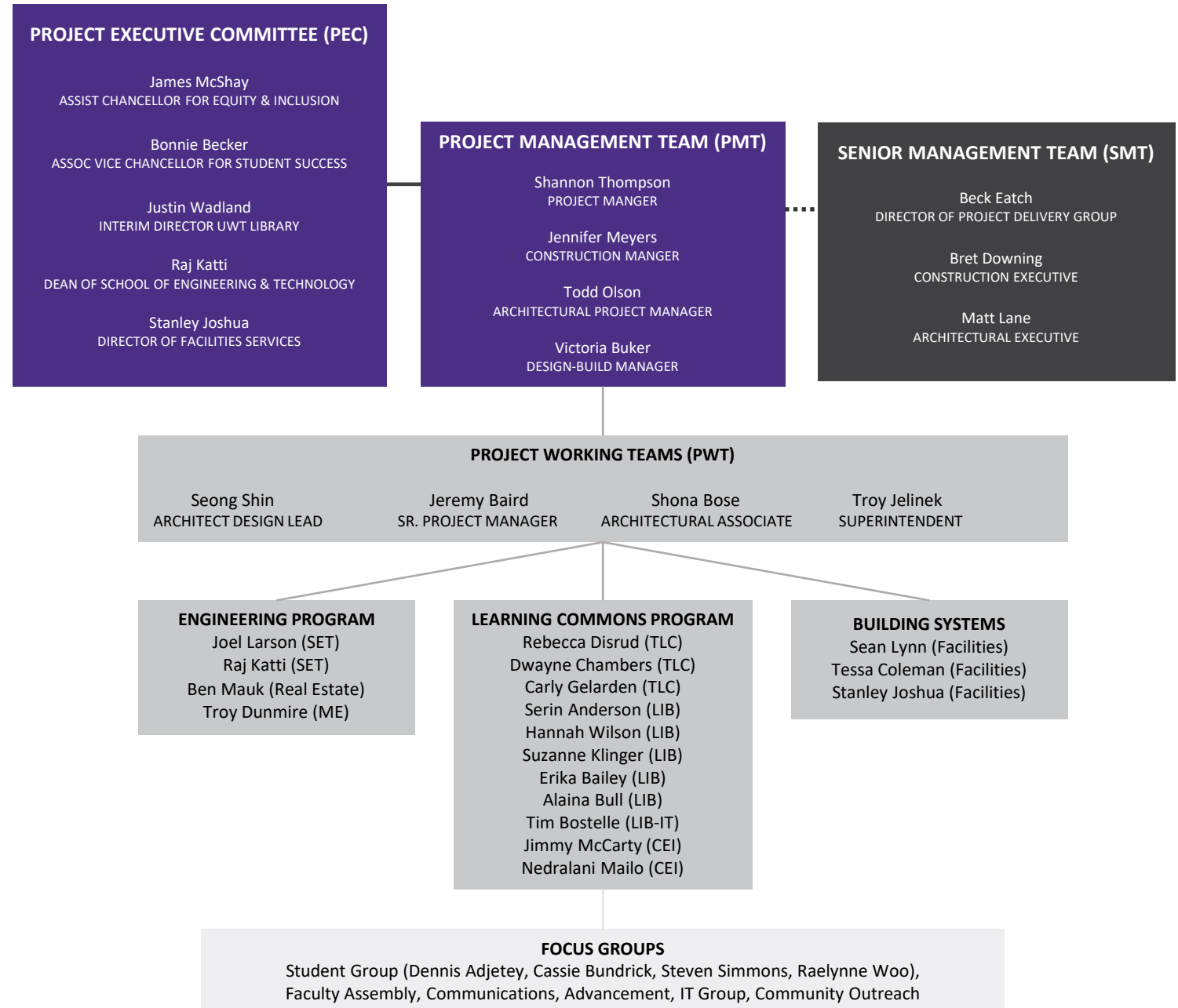


**James McShay**  
Assistant Chancellor  
for Equity and Inclusion  
Equity and Inclusion

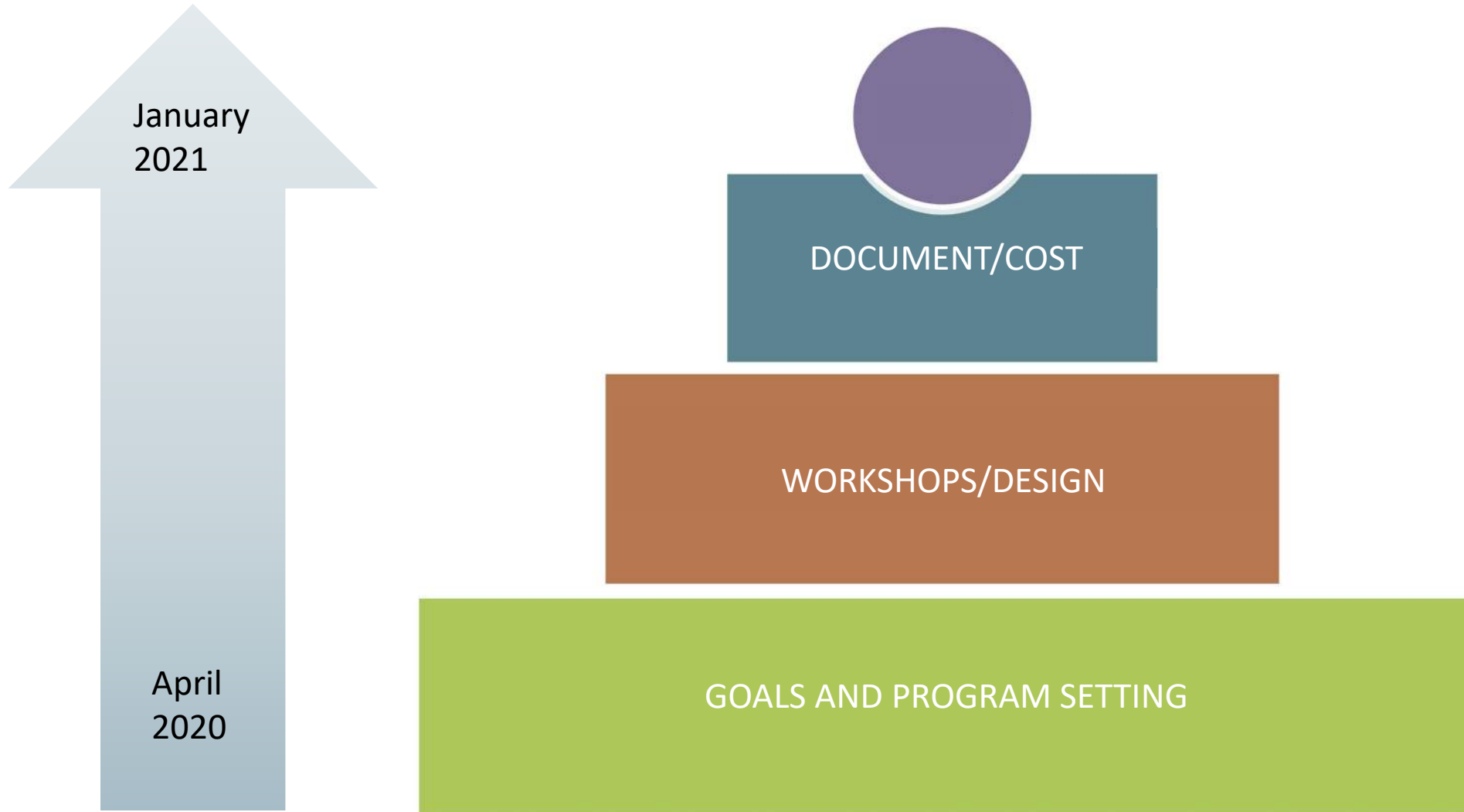


**Justin Wadland**  
Interim Director  
UW Tacoma Library

# Team Engagement



# Project Process



# Purpose of Today's Meeting

- Review Learning Commons Design
- Review Engineering Renovation Design
- Review Construction Schedule
- Question / Comment Time



# Learning Commons



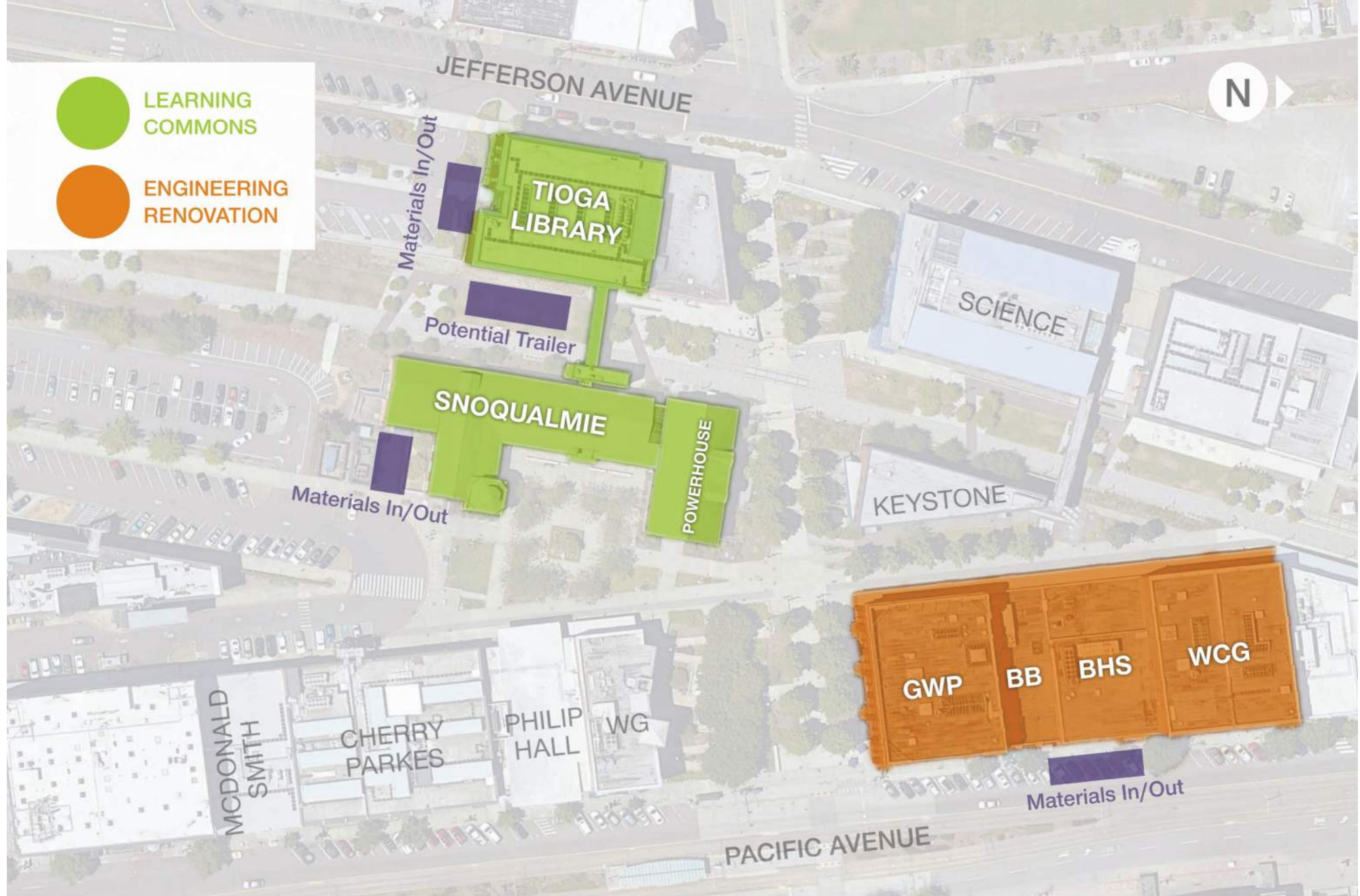




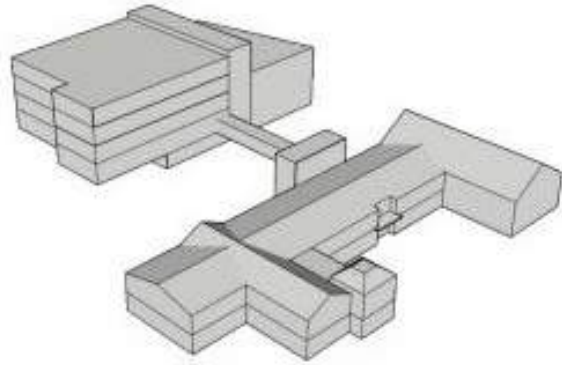
LEARNING  
COMMONS



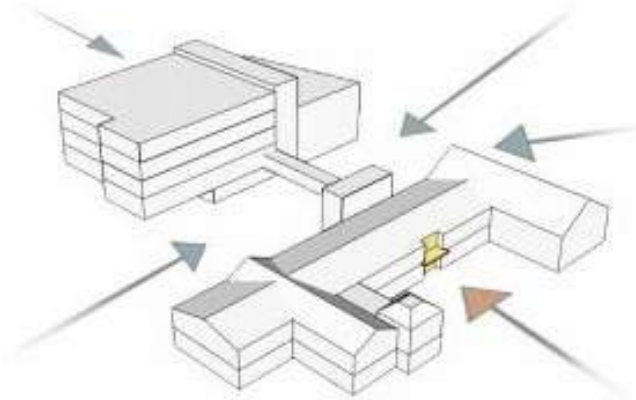
ENGINEERING  
RENOVATION



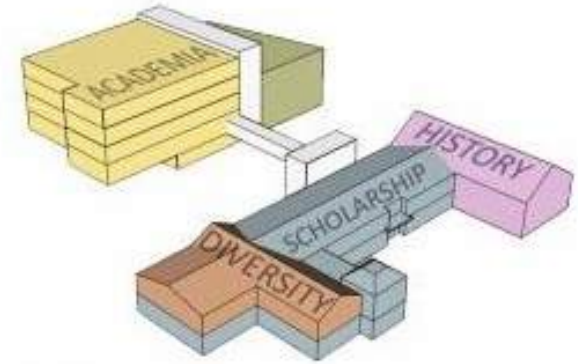
# Theme Diagrams



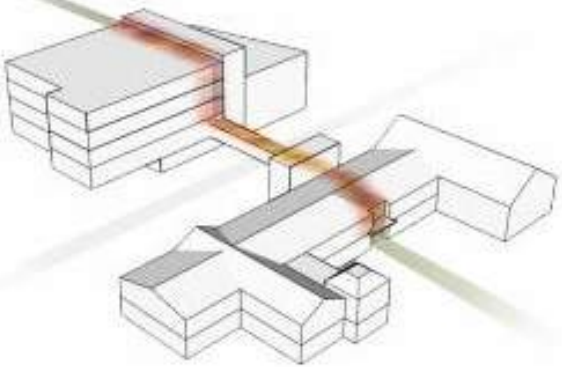
Complex as a Whole



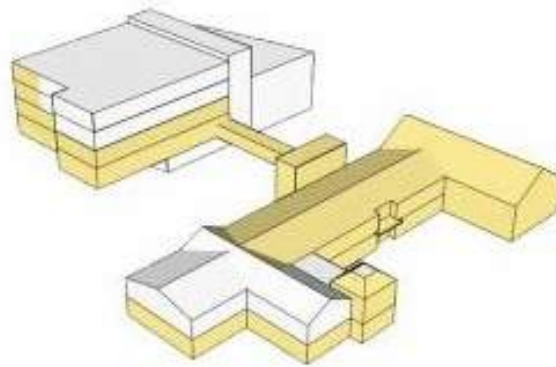
Heart of Campus



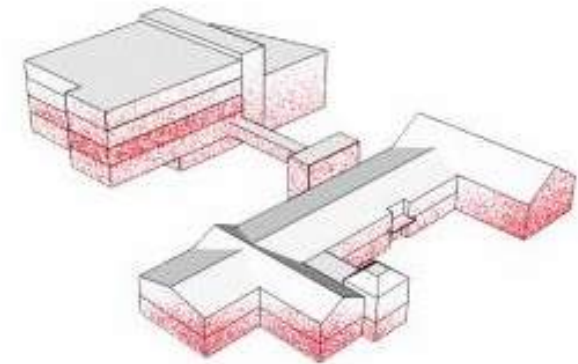
UWT Values



Navigation Spine



Shared Areas



Active to Quiet

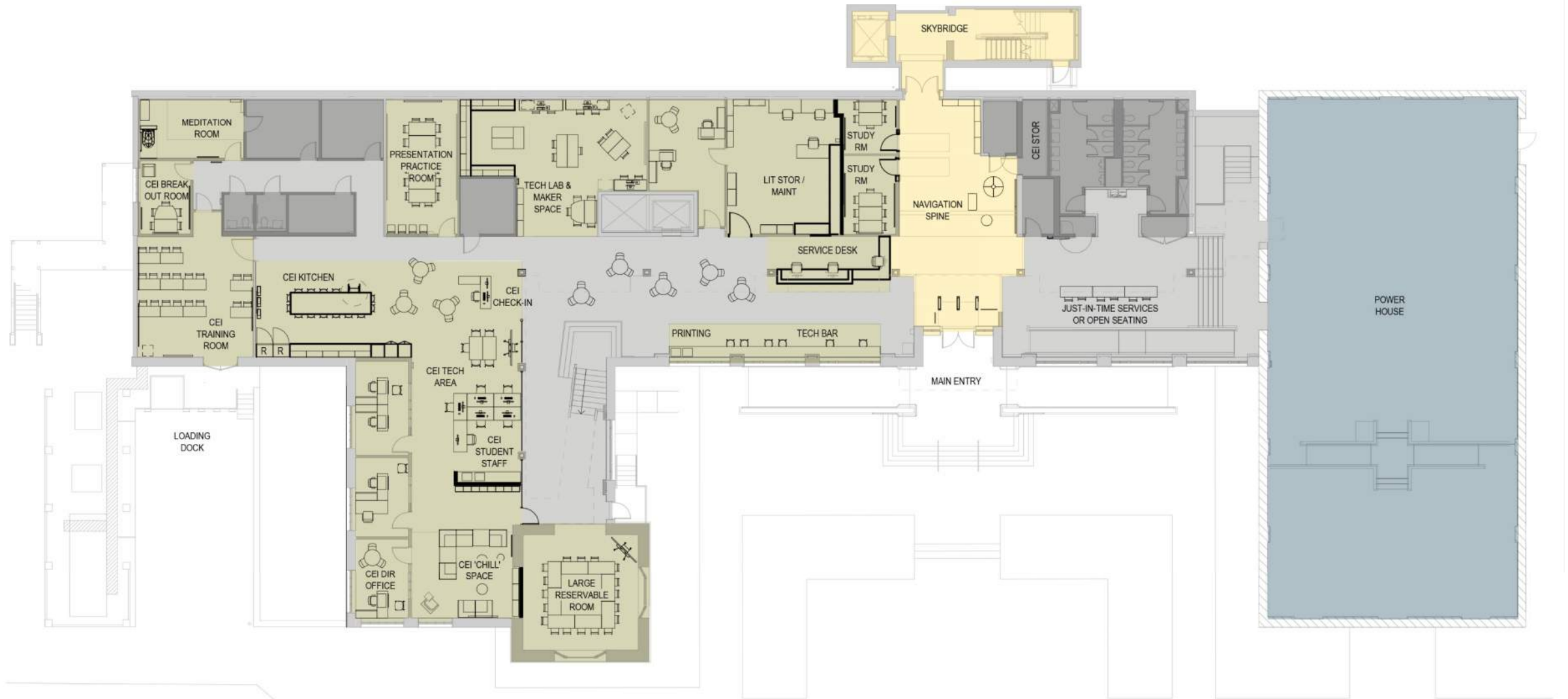
# Learning Commons Five Project Goals

1. Establish Learning Commons that integrates student-centered services, programming, and resources of partner units in support of **student success and experience**.
2. Create a **vibrant, welcoming, centrally-located** 'Campus Hub' to support an integrated model of learning that provides all students with a sense of safety and belonging.
3. Provide **technology-rich and flexible spaces** with associated student services in support of learning, innovation, and maker activities.
4. Establish **clear pathways and sightlines** to services from main entries & create a security bubble that reflects service models throughout the complex.
5. Align with UWT's commitment to being a place **respectful of its historical and social context** and provide space where **students can "see" themselves reflected** throughout the design and artwork.

# Learning Commons Plans

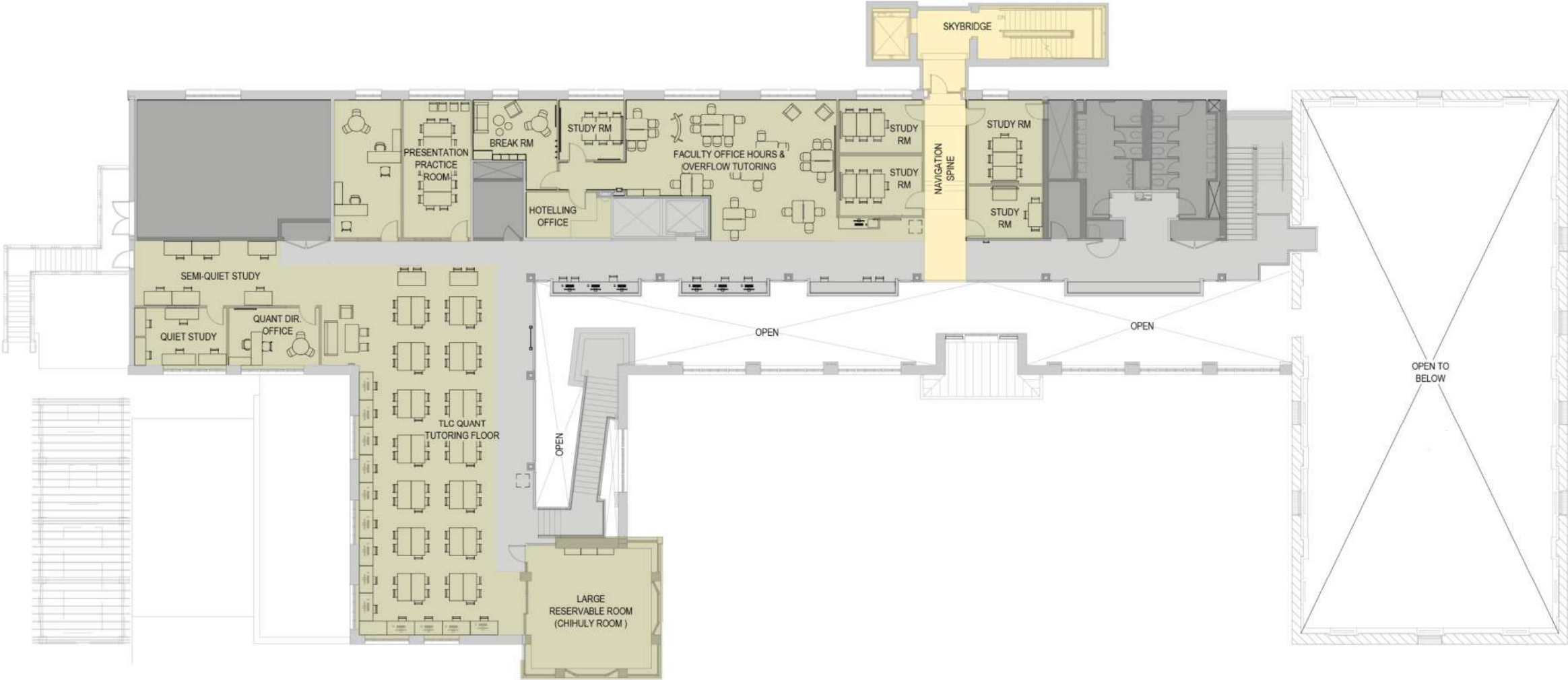


# Snoqualmie Level 1





# Snoqualmie Level 2



# TLB Level 1



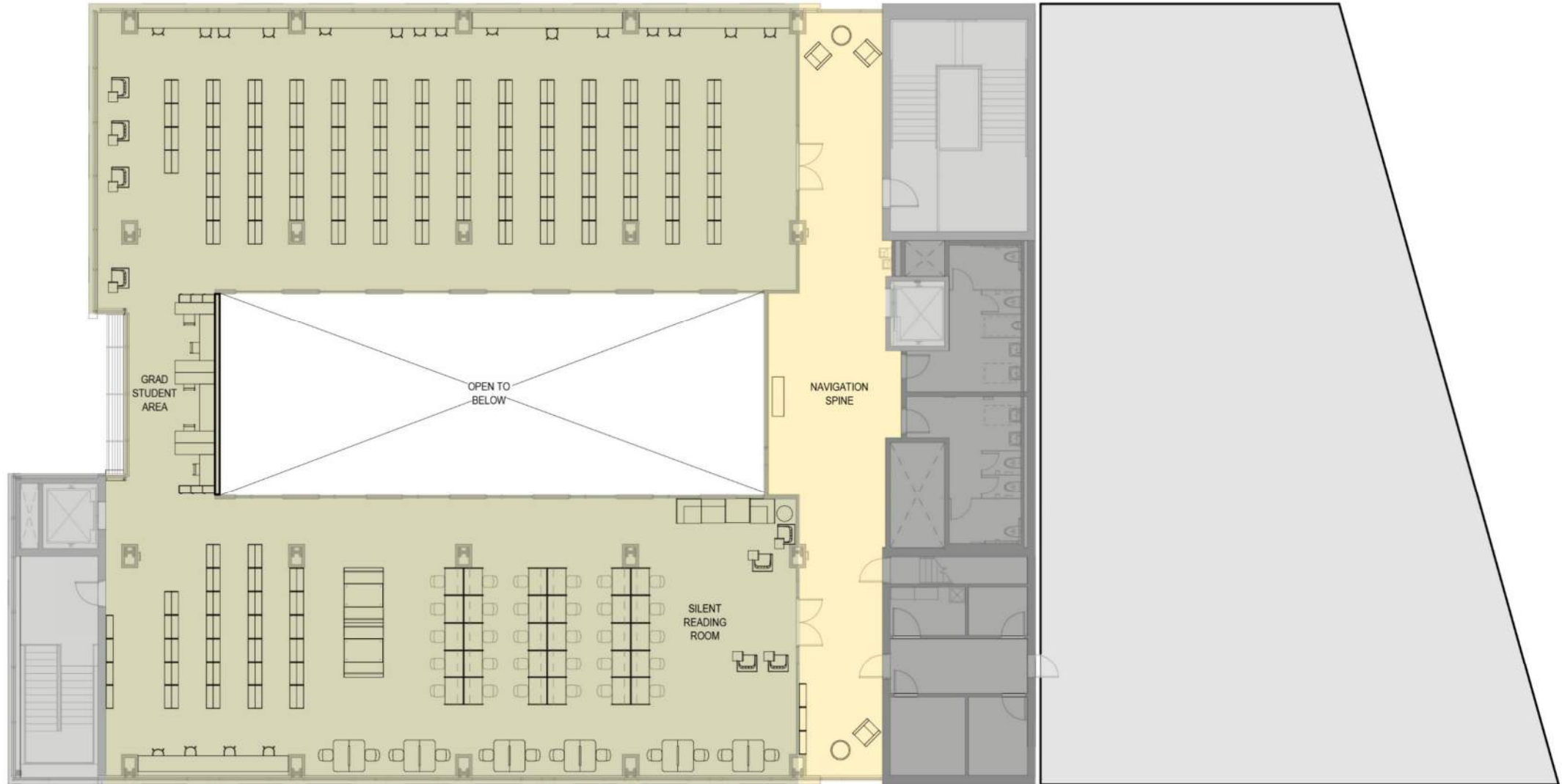
# TLB Level 2



# TLB Level 3

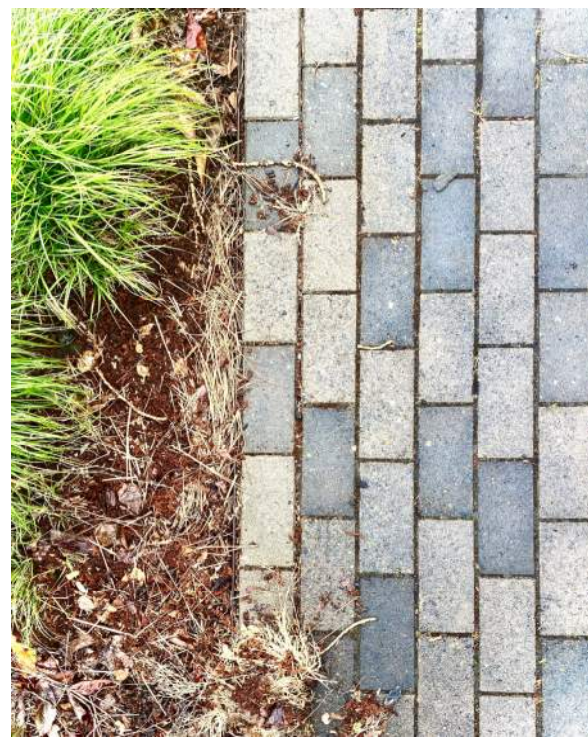
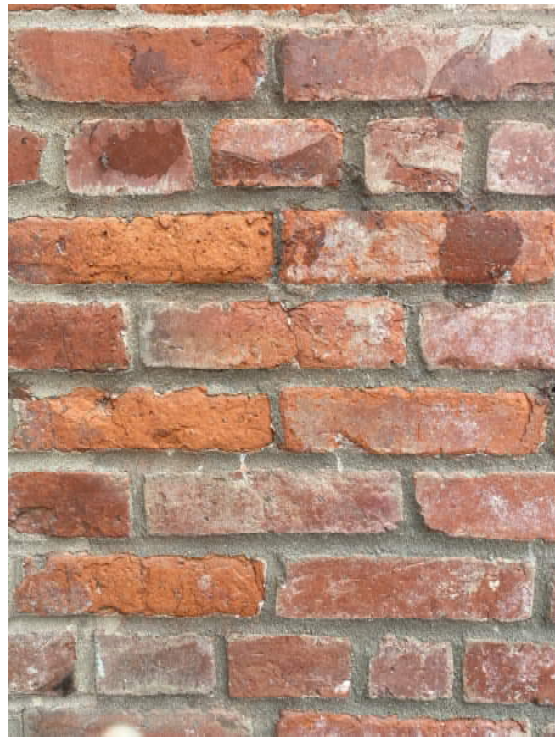


# TLB Level 4

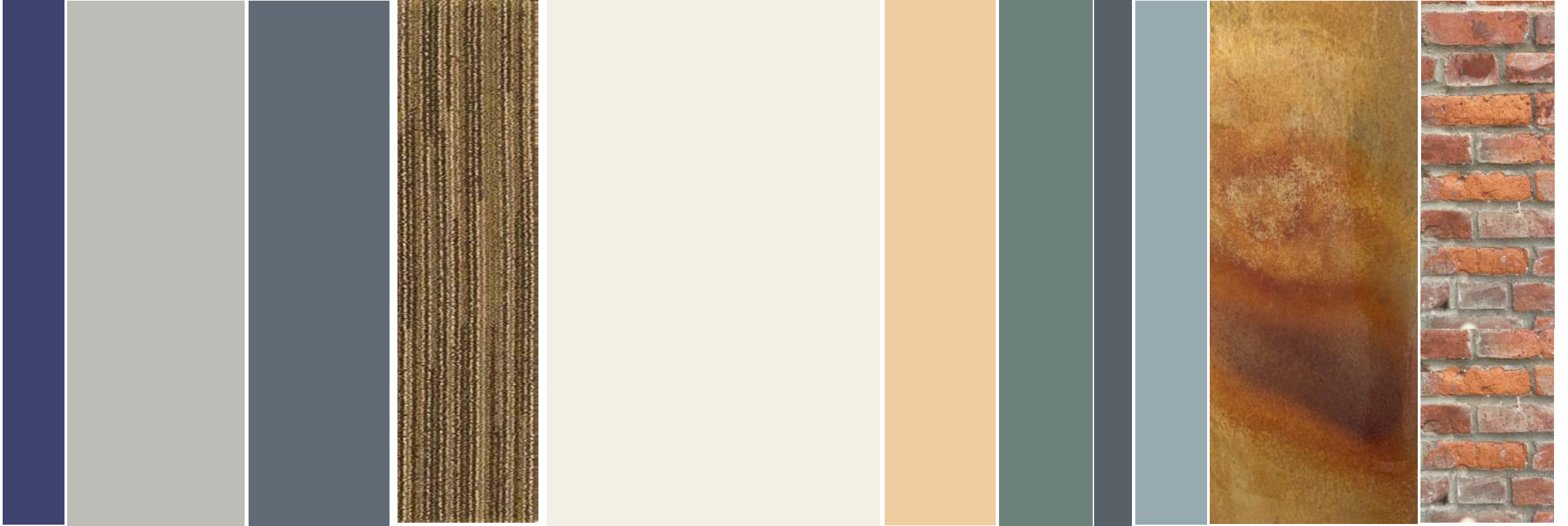




# COLORS + MATERIALS and FURNITURE



CAMPUS MATERIALS OF OLD AND NEW



EXISTING INTERIOR MATERIALS AND COLORS





**Did You Know?**  
The brick and granite along this trail add color and character to your walk, but did you know they're working hard too?

In 1965, the city of Chicago was in a dire situation. The city had nearly 100 years of dumping industrial waste and debris into the waterway. The United States Environmental Protection Agency (EPA) designated the Dear Fish Waterway as a Superfund site in 1983.

With the designation, Towson city leaders decided not to build Dear Prairie Park, which included dining, shopping and other development, until the site was cleaned up. It also created an opportunity for downtown zones to grow.

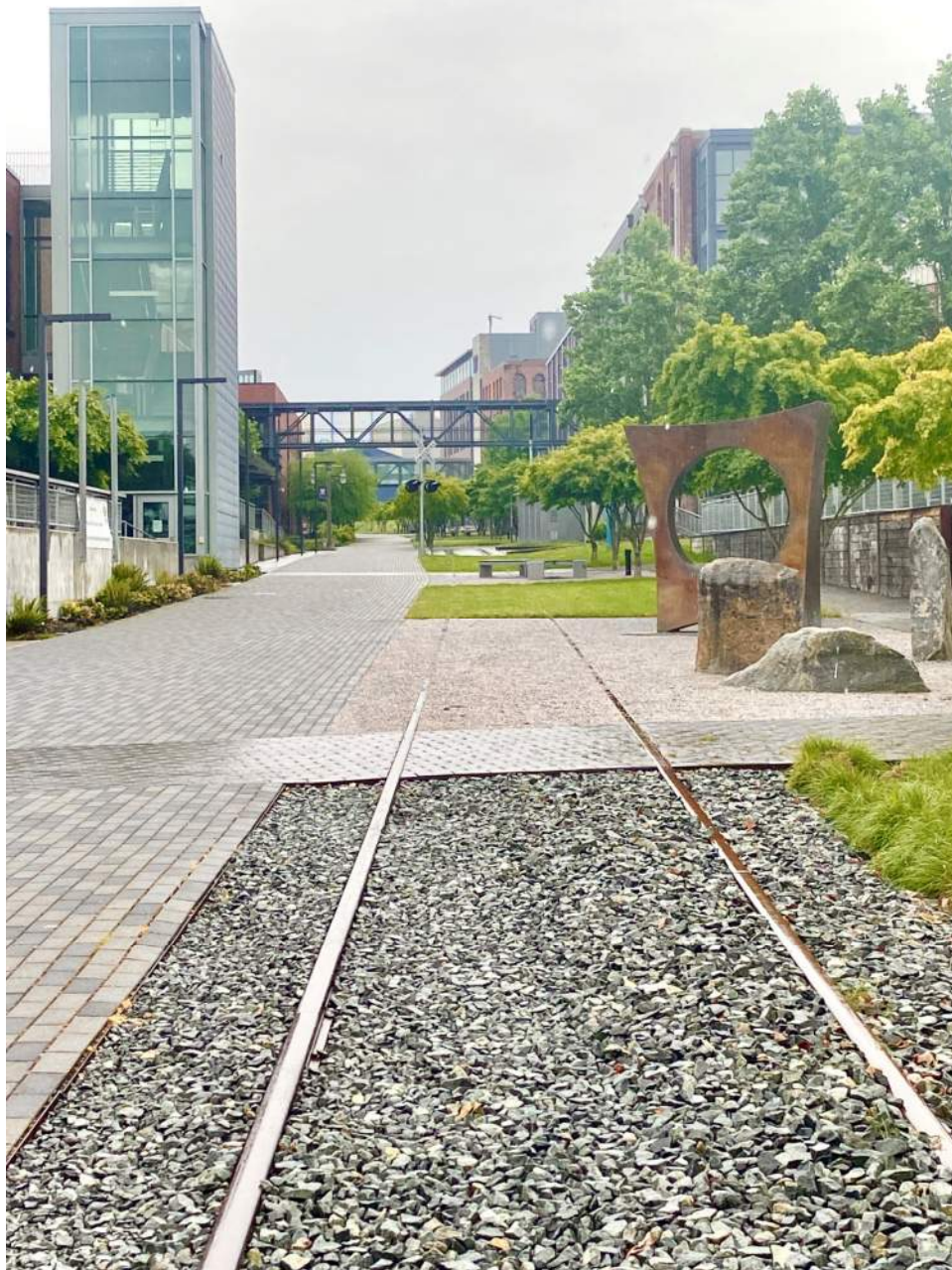
The total cleanup was completed in 2006, costing a total of \$300 million. The City partnered and worked with many groups, including corporations and businesses to clean the waterway. Financial contributions came from many businesses to help construct barrier/gate practices and create a better future.

**Keeping the Waterway Healthy**

Locally sourced materials and in situ mixing offers several environmental and economic benefits. Locally sourced materials reduce transportation costs and fuel emissions. Locally sourced materials are also more readily available and can be used in a variety of ways.

The right mix of materials can also help a concrete structure last longer. Properly designed and constructed concrete structures can last for decades. Properly designed and constructed concrete structures can last for decades.

Protecting the Puget Sound takes continued care to feeding and stopping pollution sources. Using scientific and artistic methods, parkrangers are detecting and inspecting their work with these responsible for the contamination to solve the problem. Most of the time, the companies or individuals releasing the pollutants are aware of their role in contaminating the waterway, and just informing them of the problem brings about a solution.



# STORIES OF PAST AND PRESENT



# FURNITURE



COMPUTER STATIONS WITH TRANSLUCENT PANELS



SEMI-PRIVATE COLLABORATION STATIONS



LIGHT SCALE STUDY TABLE & CHAIR



CHILDREN'S FURNITURE



MOBILE TABLES



DIVERSE SOFT FURNITURE







TLC

CEI

LEARN

ING  
MON









LEARNING  
COMMONS

W  
TACOMA

Founding Stories  
University of Tacoma

LIFE AT THE EDGE

# Engineering Renovation



# Engineering Renovation Goals

- Deliver a permanent home for Mechanical Labs by August 2021 that can achieve ABET certification and graduate students in 2023.
- Bridge the gap with dual function labs to accommodate Civil Engineering starting August 2022 until Milgard opens.
- Deliver a project at the budget.
- Transform this underutilized space into vibrant student spaces.
- Provide lab spaces where faculty have the equipment they need to be successful and where students can thrive.
- Work with Retailers to maintain their success.

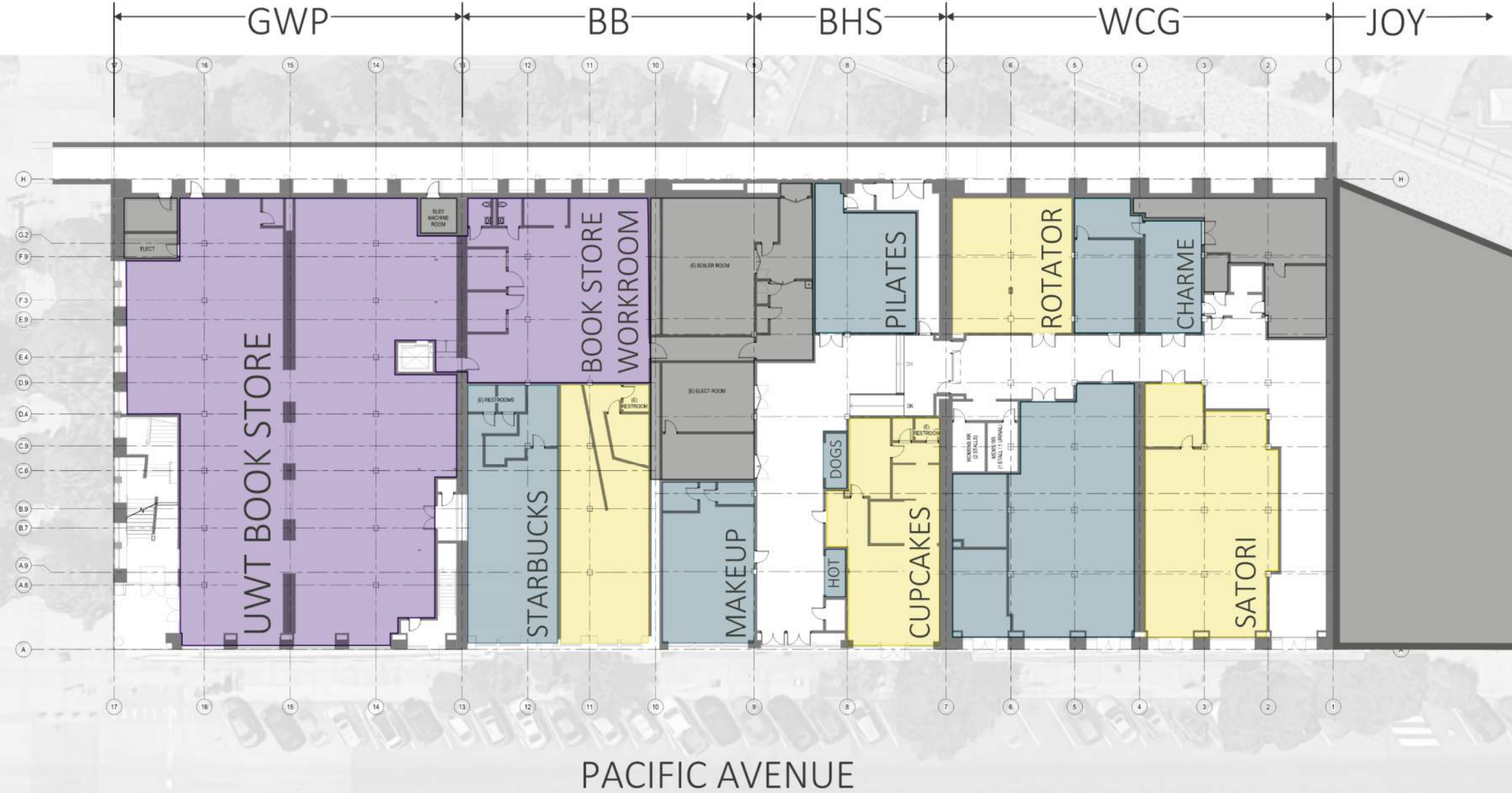




# Academic Block



# Existing Floor Plan





# Engineering Renovation

GARRETSON WOODRUFF PRATT

BIRMINGHAM  
BLOCK

BIRMINGHAM HAY & SEED

WEST COAST GROCER

JOY



← PACIFIC AVENUE →



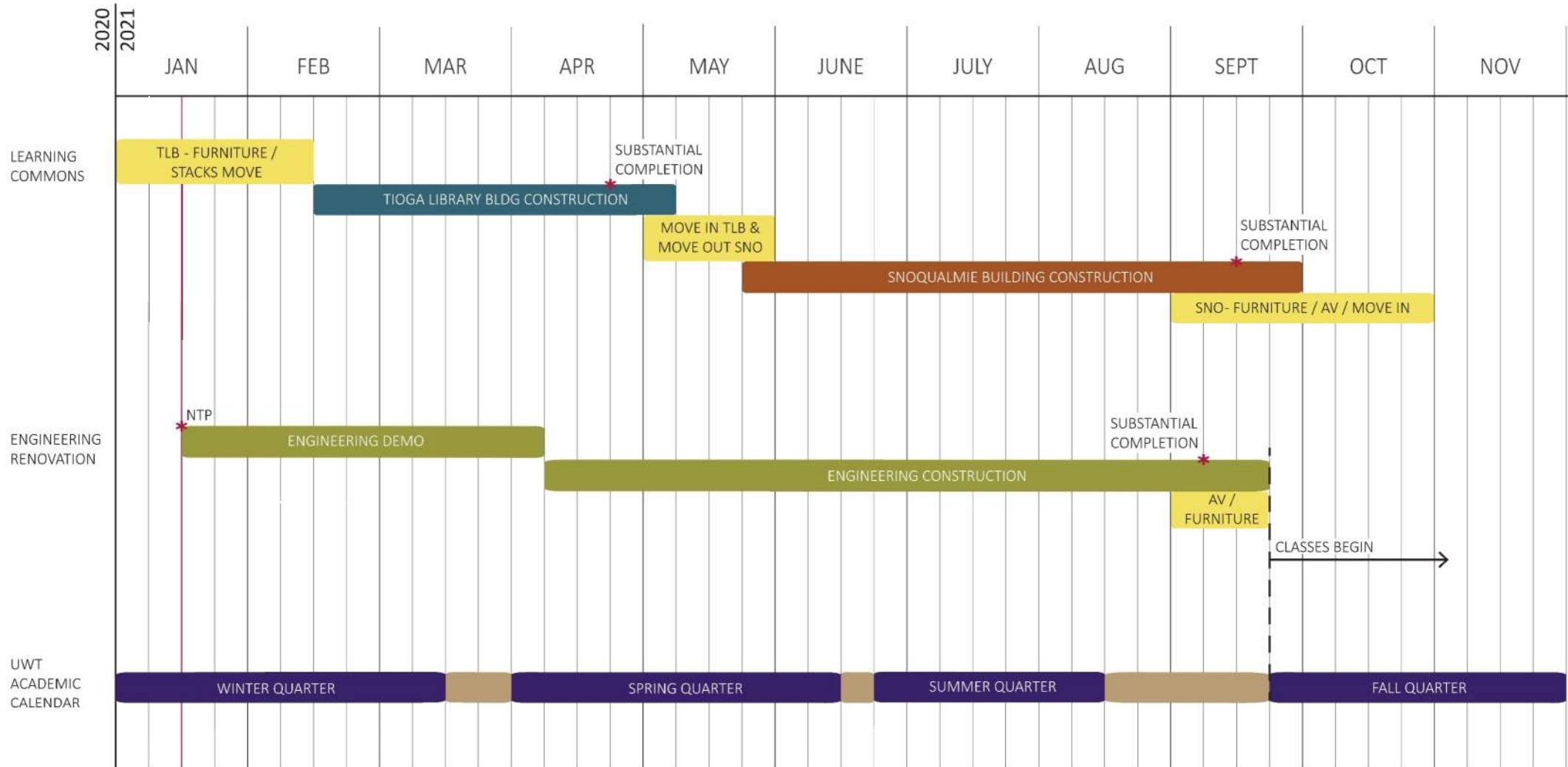


# Design-Build Process





# Construction Schedule



# Questions + Comments